



**AOYAMA ELEVATOR GLOBAL LTD.**

The printed products are for reference only. The Company reserves the right to change product design and specifications. The printed matter contained information on the suitability of the products are extremely special purpose, merchantability, quality or any procurement terms of the agreement is not long enough to guarantee or commitment of any kind, express or implied.

AD0E91AN 71332915822

**The Best elevator from Japan**



Designed to  
EUROPEAN STANDARDS

**AOYAMA**  
AOYAMA ELEVATOR GLOBAL LTD.  
**ELEVATOR**





Excellent quality Serve the world

Intelligent transportation Solutions expert





AOYAMA ELEVATOR GLOBAL LTD. is a professional elevator company who designs and manufactures complete elevators, escalators and moving walks, as well as elevator parts. The company covers a land area of over 80,000 square meters with more than 35,000 square meters of factory houses and 15,000 square meters of office area. Currently, more than 300 employees work for AOYAMA ELEVATOR, which includes 82 engineering technicians.

From design to manufacture, from installation to maintenance, AOYAMA ELEVATOR endeavor to satisfy the clients' individual requirements. Our world-wide service networks, well-trained engineering staff provides the customers with perfect services according to fixed work standard wholeheartedly. AOYAMA ELEVATOR have formulated and implemented a set of strict installation management process and operation rules to ensure our customers rest at ease.

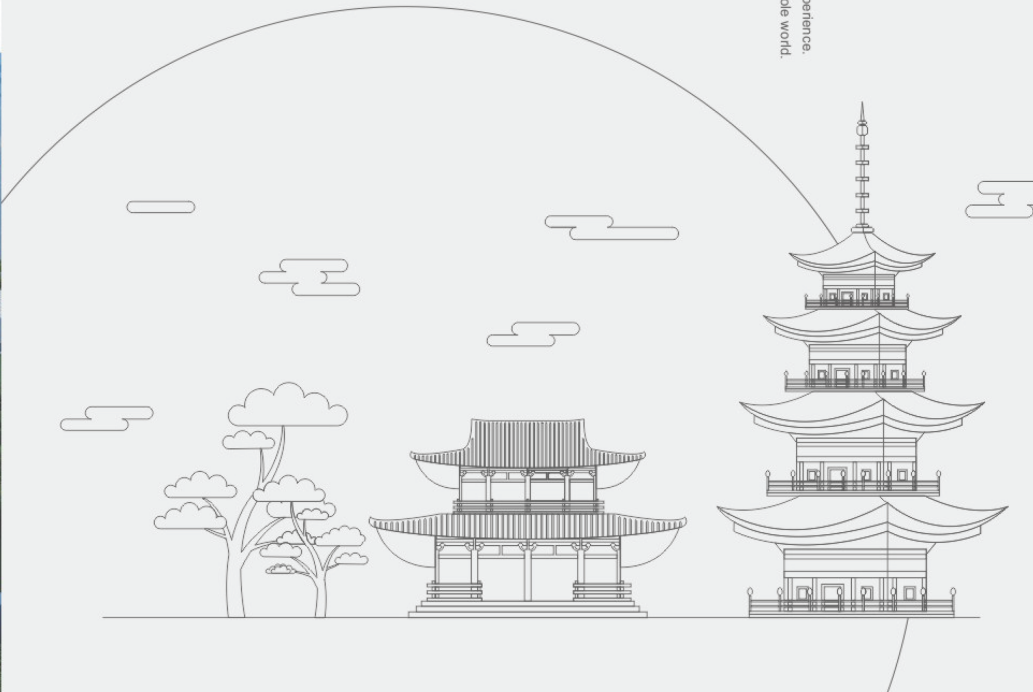
## Enterprise introduction

Every year is a safe year.  
Every day is a comfortable day.  
ELEVATORS are made by man,  
No matter what you do,  
AOYAMA ELEVATOR always sticks to a basic principle:  
Security and Comfort.  
Now it is, and it will always be, and always will be.



## History

Established in Nagoya since 1966  
The most professional elevator supplier in Japan  
50 years of elevator design, manufacturing, installation, maintenance experience.  
Since now, AOYAMA ELEVATOR is about to serve the people of the whole world.







## Core Technology

AOYAMA ELEVATOR focuses on three Japanese core systems that are essential for the reliable of elevator and escalators: Traction system, control system and door operating system.

Having inherited Japanese advanced manufacturing technology and uniformed devises, together with best skills and rigorous and careful working style, ensures the outstanding quality of our products.

### Aoyama elevator policy 三つのコアシステムの政策

現代の暮らしに欠くことのできないエレベーター。その“安全”を守ることを使命に、エレベーターは日夜活動しています。

ボタンひとつで操縦できるタテの交通機関のエレベーター。それはその裏で、精密かつ複雑な制御が働いていることの証しです。

心に秘めた固い決意。フェアかつ強力な実行力。不測の事態を予測し、突発的なトラブルに迅速に対応する・・・私たちは設立当初の気持ちを忘れることなく、3つのポリシーを心にきざみ、最善を尽くしています。

#### To create the future of peace, to solve the case.

ELEVATOR is indispensable to modern life. To protect the "safety" mission, working day and night.

Transport of vertical elevator with one button can control. It is in the precise and complex operation of the control card.

Determination of potential. A strong and fair execution. Prediction of unforeseen circumstances, the sudden trouble to respond quickly and we can forget the feeling of the three policy in every heart, and do my best.

FAIR  
フェア

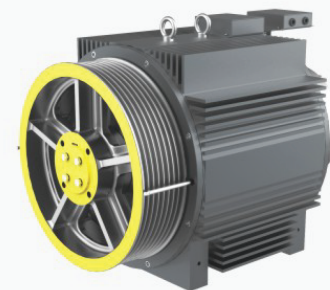
もっと公正に、  
さらに適正に。

COST  
コスト

高い品質を、  
どこよりも安く。

HEART  
ハート

顔の見えるスタッフが  
親密に。



Improve transmission efficiency  
25%-35%



Noise reduction  
5-10db

#### Gearless traction machine -YASKAWA

We choose rare earth material and fully combine coaxial transmission technology and digital variable frequency technology with group computer combined control technology. With less running cost & less energy dissipated. Compared with the ordinary and traditional technology, gearless traction machine can save more than 46% of the energy. Gearless traction machine needs no renewal of lubricant. Without grease pollution, low noise, quiet & natural.



Low noise



Green environmental protection



Effective and energy-saving



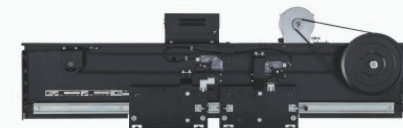
Stable and reliable



#### Japanese Digital Inverter Technology -YASKAWA

Advanced vector conversion technology, according to human body riding comfort, it will take real-time speed adjustment.

Advanced high-speed digital signal processing system can increase the sensitivity of the speed control of the traction machine which will minimize the elevator vibration. The newest low-noise control technology can make the elevator operates quietly and steadily.



#### Panasonic Variable Frequency

Panasonic variable frequency door machine can freely adjust door opening/closing speed. It is equipped with self-study function. It internally sets the optimized running curve with the convenient adjustment. It owns the excellent closed loop control, instant control to the running speed and position, traditional travel switch software.





自動歩道  
Moving walk

**Safe and stable**  
安全で信頼できる

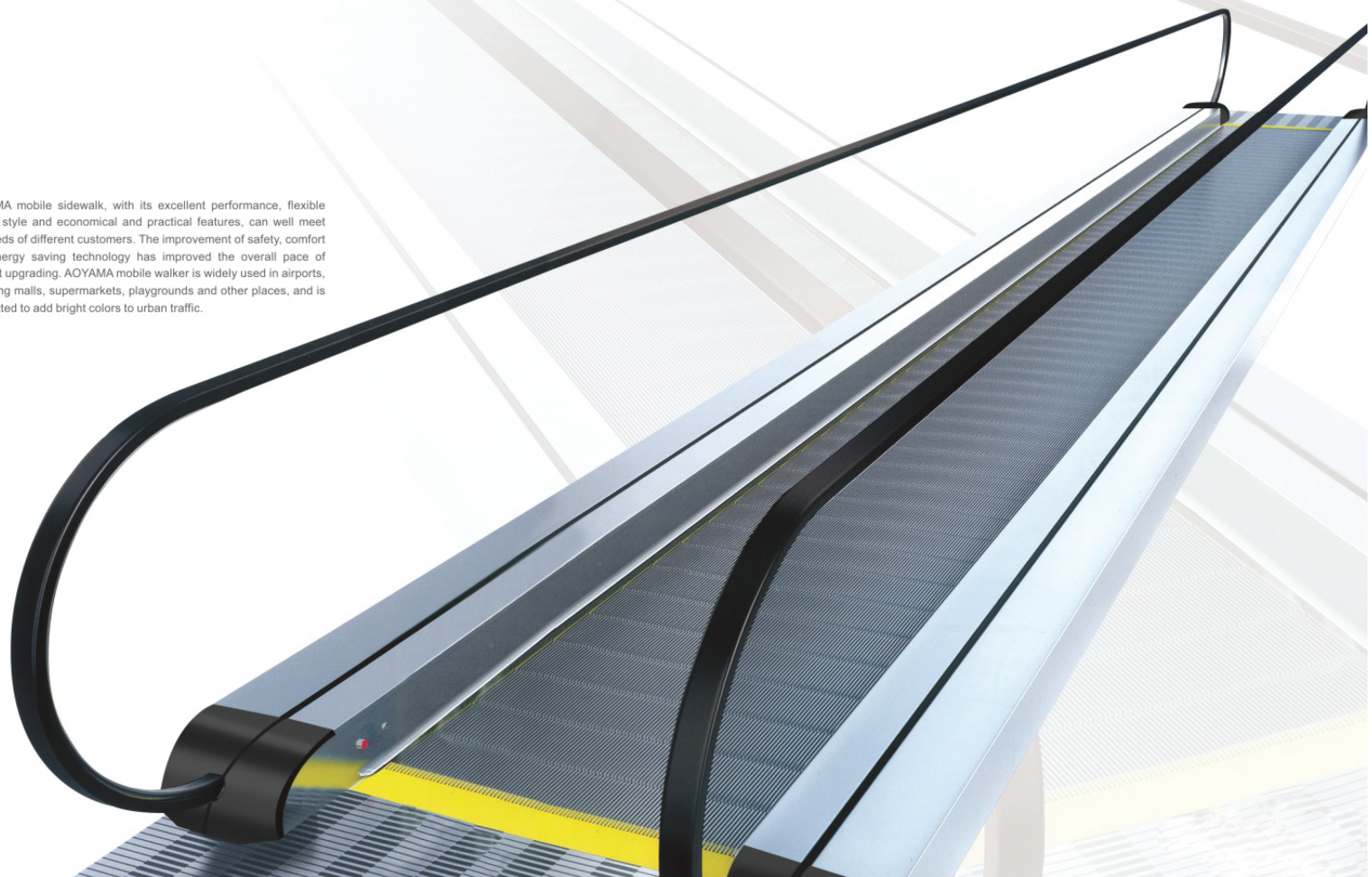
The anti-skid slot design of the short pedal surface possesses good non-skid property and makes the usage safe and comfortable. The extreme small angle of inclination of the broach ensures the shopping cart easily pushed to the walkway. The short pedal directly connects with the transmission chain, ensuring the moving walk operates more smooth and steady and the product maintenance easier.

AOYAMA mobile sidewalk, with its excellent performance, flexible design style and economical and practical features, can well meet the needs of different customers. The improvement of safety, comfort and energy saving technology has improved the overall pace of product upgrading. AOYAMA mobile walker is widely used in airports, shopping malls, supermarkets, playgrounds and other places, and committed to add bright colors to urban traffic.

テクノロジー  
Practical

エレガント  
Elegant

実用的である  
Science





## Standard Configuration

標準構成



### Micro Computer board technology

The application of computer technology, has the feature of a stronger expansion, more refined fault detection function, and more security performance.

## Standard Configuration

標準構成

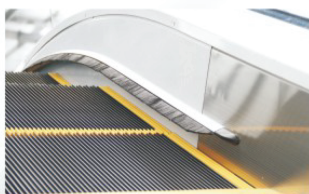


### Water level detection sensor (outdoor standard)

Install water level detection sensor out of the machine room, which can automatically detect the water level, and found the water trouble.

### Temperature controller (outdoor standard)

When the environment temperature is too low, the elevator system will automatically start heating device to ensure the normal operation of the escalator and also a comfortable environment for passengers.



### Skirt panel brush

The skirt panel brush is installed on the both sides of the skirt panel above the steps and prevent things or shoes from touching the skirt panel and prevent something from entering into the gap between skirt and steps.

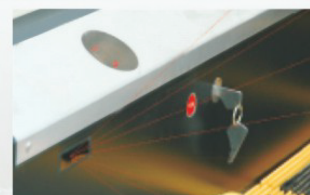


### Emergency Stop Button

On an emergency, press the button, the escalator/moving walk will immediately stop running.

## Optional Configuration

オプション設定



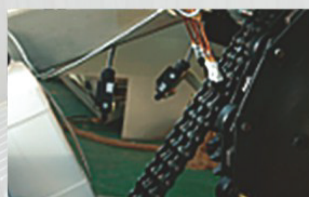
### Emergency Stop Button

On an emergency, press infrared sensors at the access area detect passengers in entering the floor and activate the operation mode. After the passengers leave, the escalator will stop running to save energy, the button, the escalator/moving walk will immediately stop running.



### Handrail inlet protection

The handrail inlet protection prevents objects or limbs from getting roped into the handrail re-circulation.



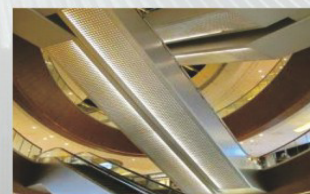
### Automatic oiling

The handrail inlet protection prevents objects or limbs from getting roped into the handrail re-circulation.



### Skirt panel illumination

The skirt panel lighting along the step running track is an elegant way to comply with the required illumination. At the same time, they are an architectural element emphasizing the escalators and giving passengers a pleasant and safe feeling.



### OUT CLADDING

Special design of the escalator outside decoration, cover the whole escalator truss, perfect to create the escalator luxury



## Handrail Colors

手すりの色



Black



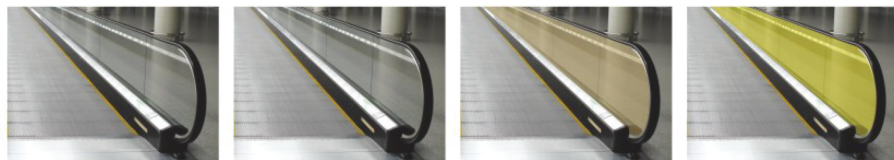
Green



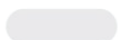
Red

## Balustrade panel colors

欄干のパネルの色



Colorless an



Deep gray



Bronze



Yellow

## Handrail illumination

手すり照明



White

Blue

Red

# Reference Projects

Location: Japan ▶▶  
Project Name: NAGOYA STATION



Location: Japan ▶▶  
Project Name: NAGOYA Library



Location: Japan ▼▼  
Project Name: NAGOYA Airport  
Specs: Elevator Modernization



▲ Location: Pakistan  
Project Name: Saddar Hotel4 units  
high class decoration lifts



▲ Location: Dubai UAE  
Project Name: AL MESHWAR  
RESTAURANT



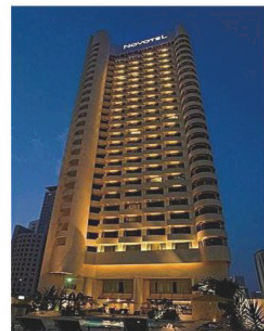
▲ Location: Philippines  
Project Name: 12AYMNEW-0218-PJG-  
HOSPITAL



◀ Office building in Japan  
Specs: 6 units 4m/s Elevators



Commercial building in Brazil ▶▶  
Specs: 12 units 3m/s elevators



◀ Location: Pakistan  
Gold Tower



▲ Residence in Brazil  
Specs: 12 units Elevators



◀ Residence in Brazil  
Specs: 28 units Elevators



# Reference Projects



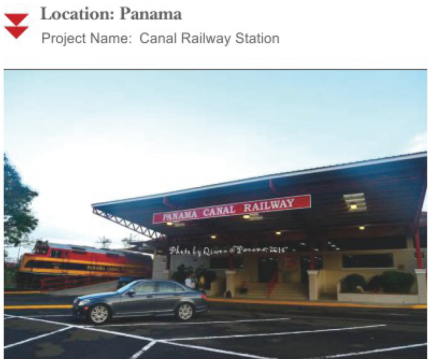
◀ Location: Panama  
Project Name: Hilton Hotel



▶ Location: Sudan  
Project Name: Government Building



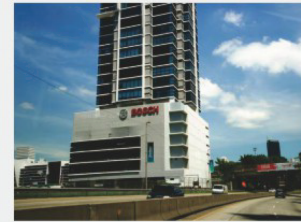
◀ Location: Panama  
Project Name: METROMALL



▼ Location: Panama  
Project Name: Canal Railway Station



▼ Location: Australia  
Project Name: Ramada Hotel



▶ BOSCH Office in Ukraine



▶ Commercial building in India



▶ Four Seasons Hotel in Iran



◀ Location: India  
Project Name: Government Building

Location: Ukraine  
Project Name: Residence ▶▶



▼ Residence in India  
Specs: 18 units Elevators



▼ island factories Myanmar  
12 units Cargo lifts





## Concentration

With professional service attitude, has always been to customer demand for the service core.  
専門的なサービス態度で、常に顧客需要をサービスの中心とします。

## Intimate

24 hours online service, always waiting for the safety of the customer.  
24時間オンラインサービス、常に顧客の安全を待っています。

## Peace of mind

Regularly send technicians to test the elevator, to provide you with the most professional maintenance.  
定期的に技術者を派遣してエレベーターを検査して、最も専門的な保養を提供します。

# サービス



専属サービスを作る  
Create exclusive services



We have been in your side

お客様のおそばに

AOYAMA ELEVATOR believe connecting you and me, not only our products, more of our services, our service begins with the customer's lift shaft, until the product's useful life for life, as long as you need, we will at any time.

青山エレベーターと私は信じて接続するだけではなく、当社の製品は、我々のサービスの多くは、我々のサービスは、顧客のリフト軸で始まり、生活用品の寿命まで、あなたが必要とする限り、我々は少しの時間である。

