

**AOYAMA ELEVATOR GLOBAL LTD.**

The printed products are for reference only. The Company reserves the right to change product design and specifications. The printed matter contained information on the suitability of the products are extremely special purpose, merchantability, quality or any procurement terms of the agreement is not long enough to guarantee or commitment of any kind, express or implied.

ADME/PLAN 713329/15/22

**The Best elevator from Japan**



Designed to  
EUROPEAN STANDARDS

**AOYAMA**  
AOYAMA ELEVATOR GLOBAL LTD.  
**ELEVATOR**





Excellent quality Serve the world

Intelligent transportation Solutions expert





AOYAMA ELEVATOR GLOBAL LTD. is a professional elevator company who designs and manufactures complete elevators, escalators and moving walks, as well as elevator parts. The company covers a land area of over 80,000 square meters with more than 35,000 square meters of factory houses and 15,000 square meters of office area. Currently, more than 300 employees work for AOYAMA ELEVATOR, which includes 82 engineering technicians.

From design to manufacture, from installation to maintenance, AOYAMA ELEVATOR endeavor to satisfy the clients' individual requirements. Our world-wide service networks, well-trained engineering staff provides the customers with perfect services according to fixed work standard wholeheartedly. AOYAMA ELEVATOR have formulated and implemented a set of strict installation management process and operation rules to ensure our customers rest at ease.

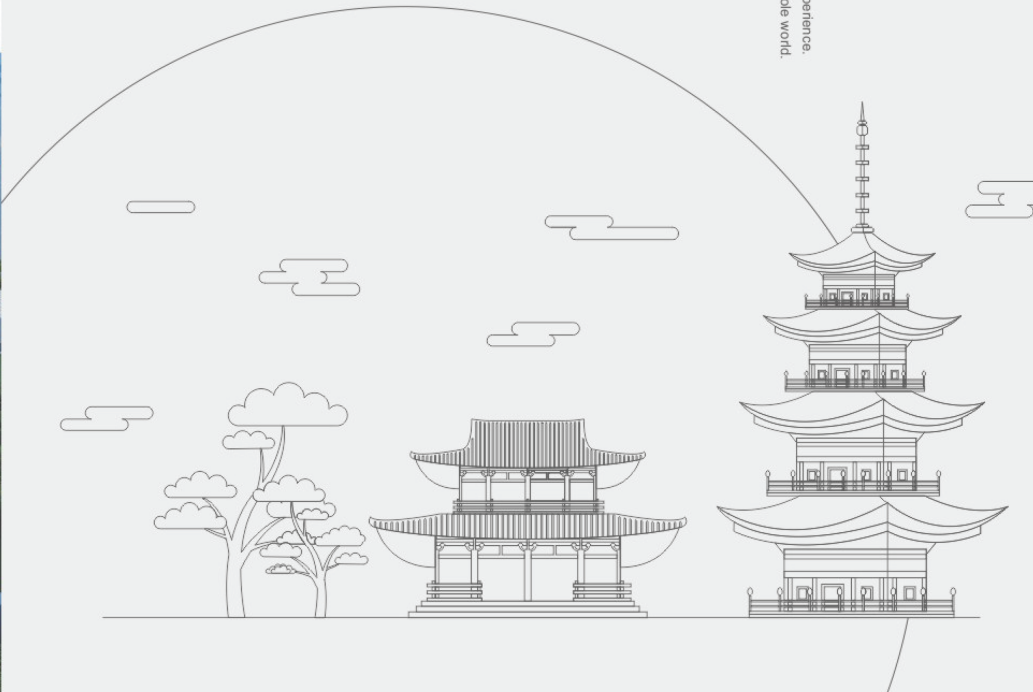
## Enterprise introduction

Every year is a safe year.  
Every day is a comfortable day.  
ELEVATORS are made by man,  
No matter what you do,  
AOYAMA ELEVATOR always sticks to a basic principle:  
Security and Comfort.  
Now it is, and it will always be, and always will be.



## History

Established in Nagoya since 1966  
The most professional elevator supplier in Japan  
50 years of elevator design, manufacturing, installation, maintenance experience.  
Since now, AOYAMA ELEVATOR is about to serve the people of the whole world.







## Core Technology

AOYAMA ELEVATOR focuses on three Japanese core systems that are essential for the reliable of elevator and escalators: Traction system, control system and door operating system.

Having inherited Japanese advanced manufacturing technology and uniformed devises, together with best skills and rigorous and careful working style, ensures the outstanding quality of our products.

### Aoyama elevator policy 三つのコアシステムの政策

現代の暮らしに欠くことのできないエレベーター。その“安全”を守ることを使命に、エレベーターは日夜活動しています。

ボタンひとつで操縦できるタテの交通機関のエレベーター。それはその裏で、精密かつ複雑な制御が働いていることの証しです。

心に秘めた固い決意。フェアかつ強力な実行力。不測の事態を予測し、突発的なトラブルに迅速に対応する・・・私たちは設立当初の気持ちを忘れることなく、3つのポリシーを心にきざみ、最善を尽くしています。

#### To create the future of peace, to solve the case.

ELEVATOR is indispensable to modern life. To protect the "safety" mission, working day and night.

Transport of vertical elevator with one button can control. It is in the precise and complex operation of the control card.

Determination of potential. A strong and fair execution. Prediction of unforeseen circumstances, the sudden trouble to respond quickly and we can forget the feeling of the three policy in every heart, and do my best.

FAIR  
フェア

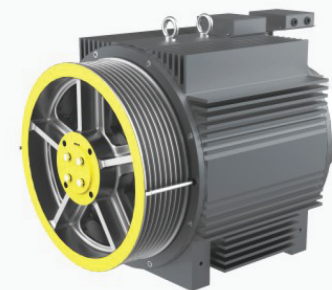
もっと公正に、  
さらに適正に。

COST  
コスト

高い品質を、  
どこよりも安く。

HEART  
ハート

顔の見えるスタッフが  
親密に。



Improve transmission efficiency  
25%-35%



Noise reduction  
5-10db

#### Gearless traction machine -YASKAWA

We choose rare earth material and fully combine coaxial transmission technology and digital variable frequency technology with group computer combined control technology. With less running cost & less energy dissipated. Compared with the ordinary and traditional technology, gearless traction machine can save more than 46% of the energy. Gearless traction machine needs no renewal of lubricant. Without grease pollution, low noise, quiet & natural.



Low noise



Green environmental protection



Effective and energy-saving



Stable and reliable



#### Japanese Digital Inverter Technology -YASKAWA

Advanced vector conversion technology, according to human body riding comfort, it will take real-time speed adjustment.

Advanced high-speed digital signal processing system can increase the sensitivity of the speed control of the traction machine which will minimize the elevator vibration. The newest low-noise control technology can make the elevator operates quietly and steadily.



#### Panasonic Variable Frequency

Panasonic variable frequency door machine can freely adjust door opening/closing speed. It is equipped with self-study function. It internally sets the optimized running curve with the convenient adjustment. It owns the excellent closed loop control, instant control to the running speed and position, traditional travel switch software.





Villa Elevator  
別荘エレベーター

AOYAMA ELEVATOR Villa elevator both in indoor or outdoor installation, no need special shaft, without special well pit, without special room, more don't need a large number of civil construction, just like any place you home appliance is convenient, not subject to any restrictions.

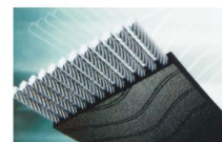
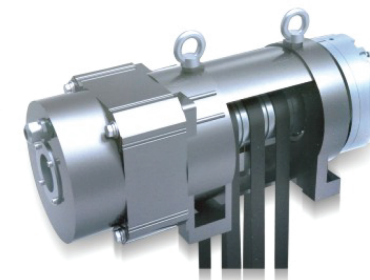
屋内または屋外設置の両方で青山エレベーターエレベーターシャフトのヴィラ、特別の必要でない、特別な井戸穴なしで、特別室なしで、より多くのない土木建設の多数を必要とします、どんな場所でもあなたは家電製品のように便利ですが、任意の制限はない。



Steel belt Villa  
Elevator

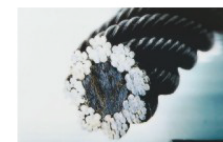
鉄分型別荘エレベーター

AOYAMA ELEVATOR villa elevator adopts more energy saving, environmental protection and durable steel belt, with high efficiency and energy saving mainframe, frequency conversion door machine, safe and reliable light screen door protection device and many other international leading technologies.



Composite Steel Belt

VS



Traditional Wire Rope

Revolutionary innovation

The polyurethane material layer, no lubrication, light weight, low vibration amplitude.

The service life is 2~3 times of traditional wire rope.

Easy to bend, increase with the driving wheel contact area, high safety factor.

Higher stability.

Same well, larger car spaces

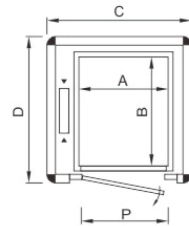
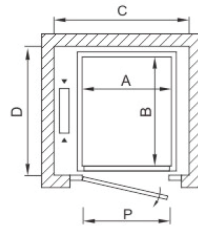
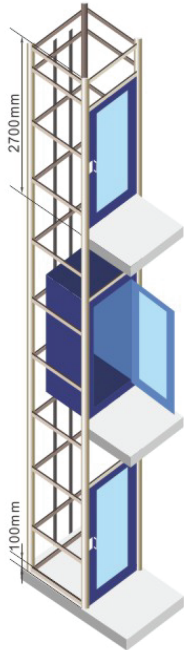




## Hydraulic Villa Elevator

油圧式別荘エレベーター

AOYAMA ELEVATOR hydraulic lift has the reliable hydraulic drive system, The quiet and smooth lift travel. The safety means such as safety valve of the protective hydraulic system, one-way valve which prevents hydraulic oil from backflow, anti-stall device and so on ensure the secure use of the lift.



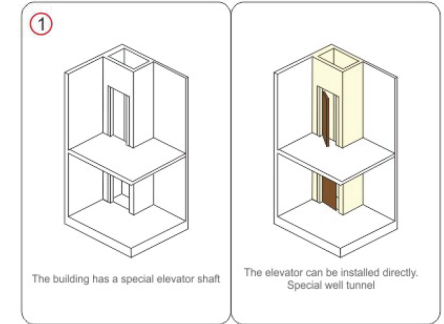
## Applicable Occasions

### Focus on high quality national brands

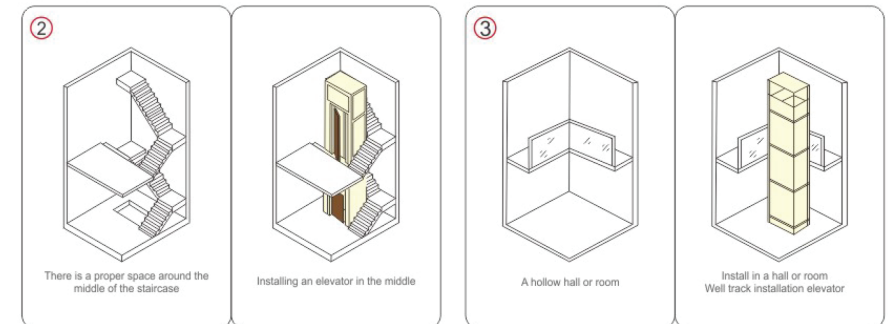
The following five building structures can be installed our products

①②③④⑤ the need to install the elevator shaft used, customers can also use their own metal frame or concrete and other materials in advance to establish the well.

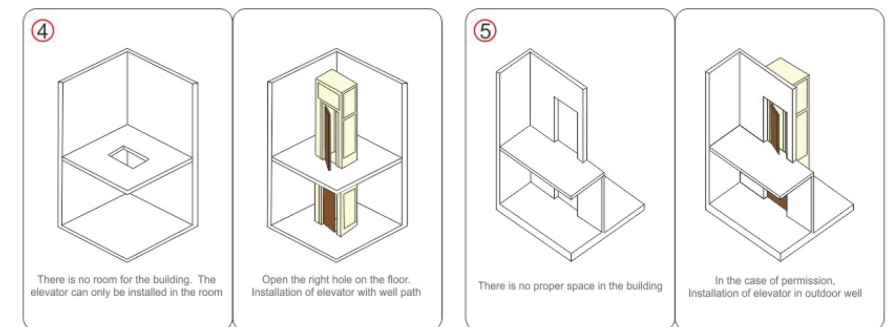
### HOISTWAY



### ROTATORY STAIRS



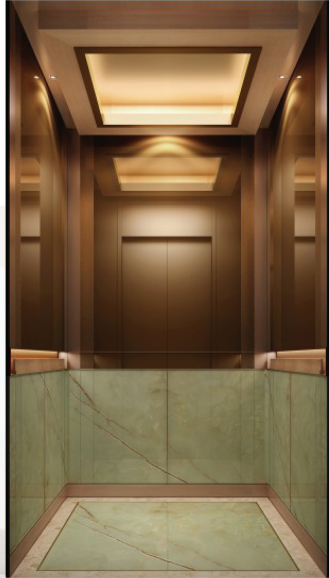
### SLAB HOLE



### OUTSIDE



## Cabin Design Japanese Villa Elevator



### AC 55

- Ceiling —— Lacquer board + bronze stainless steel bar + hidden lamp
- Side Wall —— Bronze mirror stainless steel + marble + hidden lamp
- Rear Wall —— Bronze mirror stainless steel + marble
- Handrail —— woodiness
- Floor —— Marble spelling



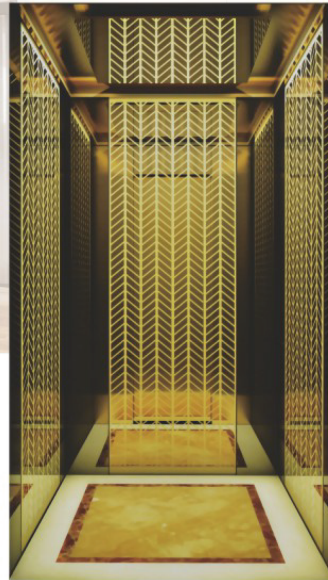
### AC 51

- Ceiling —— Hairline Stainless Steel roof+acrylic+LED
- Side Wall —— Hairline Stainless Steel
- Rear Wall —— Hairline Stainless Steel
- Floor —— Parquet PVC



### AC 52

- Ceiling —— Mirror Stainless Steel roof+LED
- Side Wall —— Painted Steel
- Rear Wall —— Mirror Stainless Steel
- Handrail —— HR02 Circle drawing stainless steel tube
- Floor —— Parquet PVC



### AC 56

- Mirror stainless steel + floral flute lamp belt —— Ceiling
- Mirror surface etching of Black Titanium mirror + titanium gold —— Side Wall
- Mirror surface etching of Black Titanium mirror + titanium gold —— Rear Wall
- Parquet PVC —— Floor



### AC 53

- Ceiling —— Mirror Stainless Steel roof+acrylic+LED
- Side Wall —— Mirror Stainless Steel+Glass
- Rear Wall —— Mirror Stainless Steel+Glass
- Handrail —— HR01 Circle drawing stainless steel tube
- Floor —— Parquet PVC



### AC 54

- Ceiling —— Titanium Gold Mirror Stainless Steel+LED
- Side Wall —— Titanium Gold Mirror Stainless Steel+Cellular marble
- Rear Wall —— Titanium Gold Etching mirror Stainless Steel
- Floor —— Parquet stone

# Reference Projects

Location: Japan ▶▶  
Project Name: NAGOYA STATION



Location: Japan ▶▶  
Project Name: NAGOYA Library



Location: Japan ▼▼  
Project Name: NAGOYA Airport  
Specs: Elevator Modernization



▲ Location: Pakistan  
Project Name: Saddar Hotel4 units  
high class decoration lifts



▲ Location: Dubai UAE  
Project Name: AL MESHWAR  
RESTAURANT



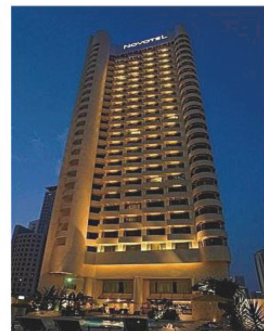
▲ Location: Philippines  
Project Name: 12AYMNEW-0218-PJG-  
HOSPITAL



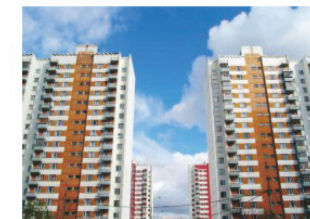
◀ Office building in Japan  
Specs: 6 units 4m/s Elevators



Commercial building in Brazil ▶▶  
Specs: 12 units 3m/s elevators



◀ Location: Pakistan  
Gold Tower



▲ Residence in Brazil  
Specs: 12 units Elevators



◀ Residence in Brazil  
Specs: 28 units Elevators



# Reference Projects



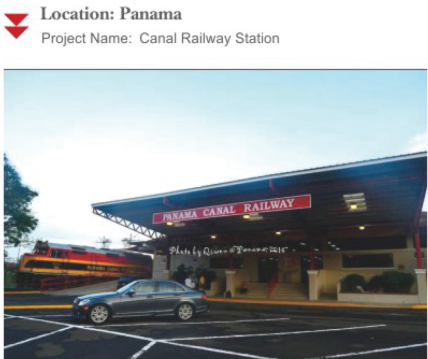
◀ Location: Panama  
Project Name: Hilton Hotel



▶ Location: Sudan  
Project Name: Government Building



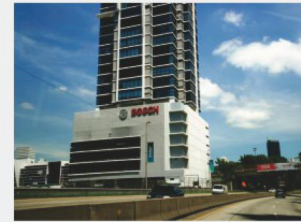
◀ Location: Panama  
Project Name: METROMALL



▼ Location: Panama  
Project Name: Canal Railway Station



▼ Location: Australia  
Project Name: Ramada Hotel



▶ BOSCH Office in Ukraine



▶ Commercial building in India



▶ Four Seasons Hotel in Iran



◀ Location: India  
Project Name: Government Building

Location: Ukraine  
Project Name: Residence ▶▶



▼ Residence in India  
Specs: 18 units Elevators



▼ island factories Myanmar  
12 units Cargo lifts





## Concentration

With professional service attitude, has always been to customer demand for the service core.  
専門的なサービス態度で、常に顧客需要をサービスの中心とします。

## Intimate

24 hours online service, always waiting for the safety of the customer.  
24時間オンラインサービス、常に顧客の安全を待っています。

## Peace of mind

Regularly send technicians to test the elevator, to provide you with the most professional maintenance.  
定期的に技術者を派遣してエレベーターを検査して、最も専門的な保養を提供します。

# サービス



専属サービスを作る  
Create exclusive services



We have been in your side

お客様のおそばに

AOYAMA ELEVATOR believe connecting you and me, not only our products, more of our services, our service begins with the customer's lift shaft, until the product's useful life for life, as long as you need, we will at any time.

青山エレベーターと私は信じて接続するだけではなく、当社の製品は、我々のサービスの多くは、我々のサービスは、顧客のリフト軸で始まり、生活用品の寿命まで、あなたが必要とする限り、我々は少しの時間である。

